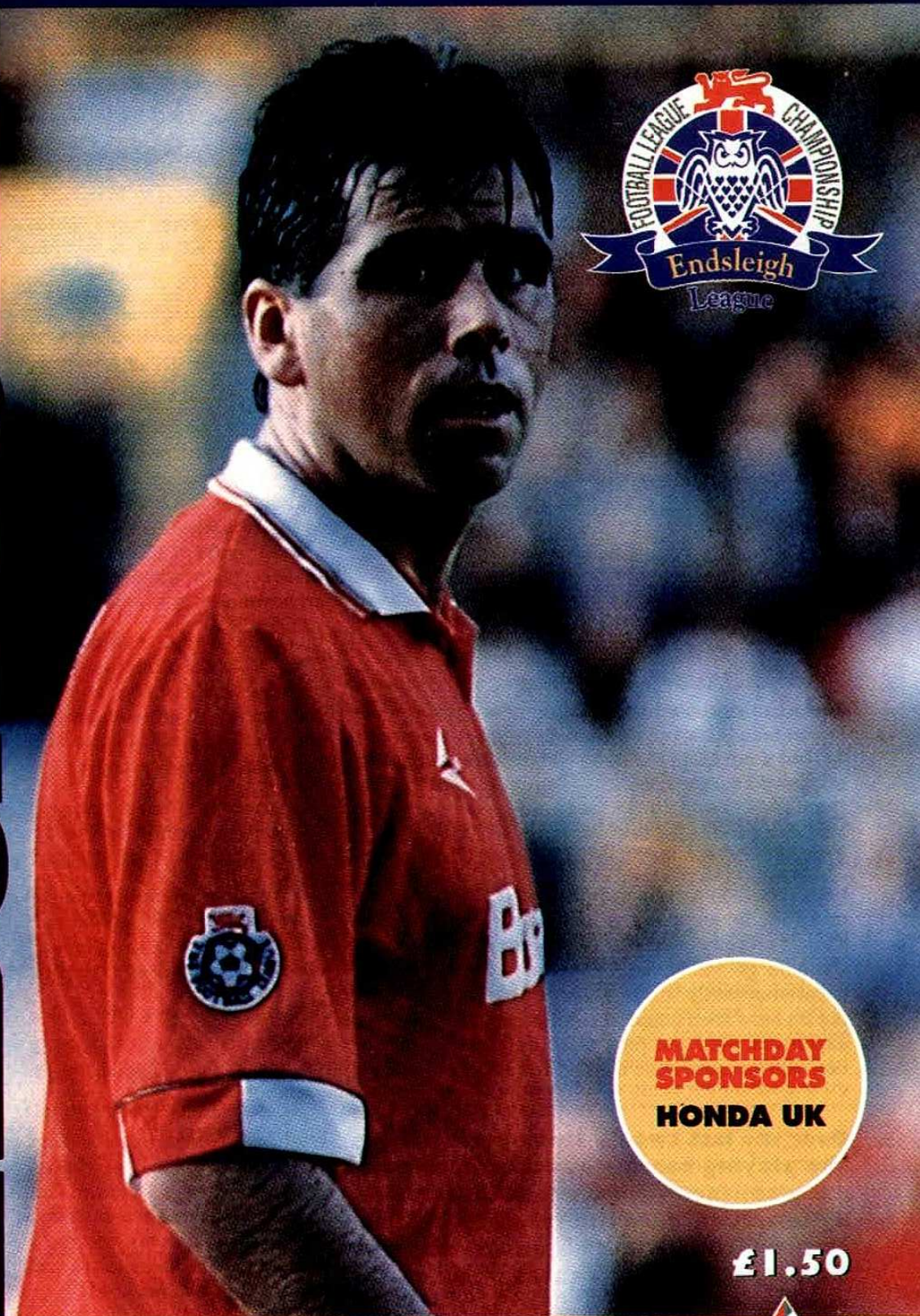


OFFICIAL MATCHDAY MAGAZINE

SWINDON TOWN



**MATCHDAY
SPONSORS
HONDA UK**

£1.50

**ENDSLEIGH LEAGUE DIVISION I
SWINDON TOWN vs SOUTHBEND UNITED
SATURDAY 22 OCTOBER 1994 KICK-OFF 3.00 PM**

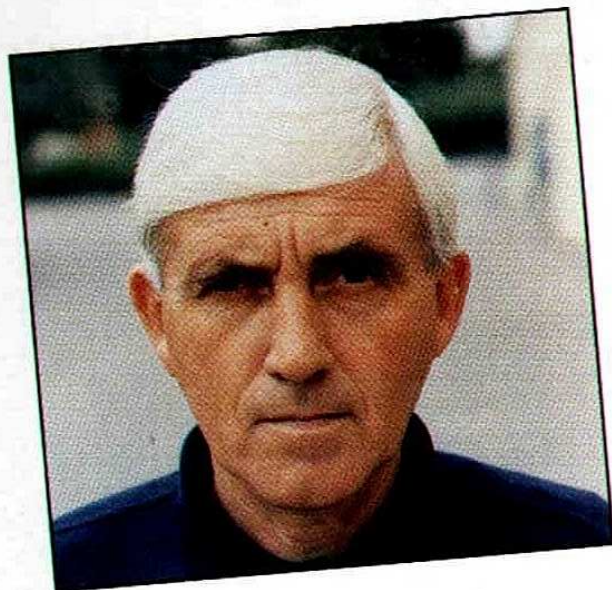


Main Sponsor  **Burmah**



KEVIN MORRIS

By PAUL PLOWMAN



We are all saddened by the news of the death of physiotherapist Kevin Morris last week.

Kevin had occupied the treatment room since the North Stand was built over twenty years ago and it will not seem quite the same without him. Something else will be missing too.

On the worktop just inside the door, Kevin's pipe could always be found. The two rarely parted company.

I can recall, on a close season tour to Tunisia in the mid-70's, when a group of players decided that Kevin - relaxing quietly by the hotel pool at the time - should go for a swim. He was surrounded and unceremoniously tossed full - length into the water. But his head soon popped up, muttering a profusion of expletives. And the pipe was still clenched firmly between his teeth as he blew an array of bubbles!

Over the last twenty three years during the playing season we were in almost daily contact with one another either by telephone or in the Treatment Room at the Club. We had no disagreements, we respected each others position, it worked well.

Kevin was self taught to a great extent, attended courses to improve his undoubted skills and developed into a very good and respected physiotherapist. His many patients will testify to this. Swindon Town Football Club was his life, in the playing season he never had a day off work. I tried to persuade him to have regular rest days away from football, he always said he would but never did. His silver hair and his pipe were his trademarks in the

Kevin, who was 54 earlier this month, was one of Bert Head's first signings when he took over as manager at the County Ground in 1956. He started in the Town's Borough League side, in the old wing-half position, and had he not suffered a disability as a child - he was blind in one eye - Kevin may well have made his mark as a professional.

As it was, his appearances were restricted to the Combination and Wiltshire Premier League sides - at which level his ability was evident with eight goals in 1960/61.

But Kevin decided to hang up his boots soon afterwards and, under the close scrutiny of the late Harry Cousins, took up an interest in the treatment of injuries. He became Reserve Team trainer and in 1966 embarked on a three-year F.A. course in Physiotherapy at Lilleshall. He took over from Harry as first team trainer in 1970 and soon became acknowledged as a leading light in his field.

In 1978, Kevin turned down an offer to join Brian Clough, a decision the then Nottingham Forest manager later described as 'his first failure'. Mr Clough was just one of Kevin's many admirers, along with those he had patched up and sent back to the fray or nursed to a speedy recovery.

But tending to the injured was far from Kevin's only talent. His expertise on the 'spoons' was renowned and his anecdotal tales provided equal entertainment.

Yet in a very public arena, Kevin remained a very private person. He strived to cope with the illness which threatened to take the life of Joy, now his widow. He also leaves a daughter, Sarah.

No longer will we hear "There's only one Jimmy Saville".

There was only one Kevin Morris.

world of football. He knew all his opposite numbers in the other League Clubs, what a help that has been to Swindon Town. He knew Consultant Orthopedic Surgeons on a personal basis in many different parts of the country. When I referred a player for a second opinion he would attend in a supportive role and learn exactly what was required.

His contacts were legion. He always knew someone who knew someone if something was required by an individual or our Club.

I find it distressing to write more, but I know I have lost a colleague, a very good friend and our Club has lost a man who really cared.

John Nicholas. Club Doctor.



SWINDON TOWN FOOTBALL CLUB
County Ground, County Road,
Swindon, Wiltshire, SN1 2ED.

Tel: Swindon

(01793) 430430 Administration
(01793) 536170 Fax
(01793) 529000 Ticket Office
(01793) 421303 Community Office

Chairman: R.V.HARDMAN

Vice-Chairman: J.M.SPEARMAN

Directors: P.T. ARCHER
SIR D.S. WILLS Bt.
C.J.PUFFETT

Associate
Director: J.R. HUNT

President: C.J.GREEN

Company
Secretary: STEVE JONES

Team Manager: JOHN GORMAN

Club Secretary: JON POLLARD

Marketing
Controller: PHIL ALEXANDER

First Team
Coach: ANDY ROWLAND

Reserve Team
Coach: ROSS MacLAREN

Youth Team
Manager: JOHN TROLLOPE M.B.E.

Youth Development
Officer: ADRIAN RIDDIFORD

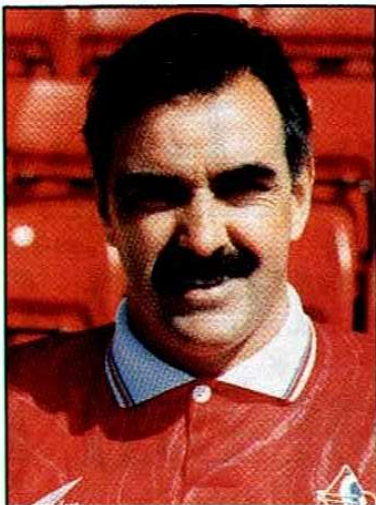
Football Community
Development
Officer: JONATHAN TRIGG

Safety Officer/
Stadium Manager: MIKE HUGHES

Hon. Medical
Officer: Dr. J.D. NICHOLAS

Hon. Club
Chaplain: Rev. PAUL BENNETT

FROM THE TOP *With* JOHN GORMAN



It's hard at times writing notes after a loss but losing at Portsmouth last Saturday was nothing like the shock news of the death of our popular Club Physio Kevin Morris. Nothing could have prepared us and to say the whole Club was devastated is an understatement.

Coaching staff, players, Directors, admin, backroom and groundstaff and not to mention the fans and his many friends in football and outside the game have nothing but sympathy for his wife Joy and daughter Sarah.

The countless phone calls and cards I've received from the football world asking us to pass on their condolences to his family and the club have been touching. It shows how people care and a fine example was that the first clubs to offer to help were our local rivals Bristol City and Oxford United which shows the good spirit in the game.

The one thing none of us will do is forget Kevin and the happiness he showed only at the last home game when we beat Wolves when Paul's two goals and Joey's winner had him cracking jokes with great humour. He always had the lads in stitches and had a nick-name for everybody. He was also the life and soul playing his musical instruments which he seemed to take everywhere. We must always cherish his memories and try to be positive.

No excuses at Portsmouth but at least we showed character and the heart to come back like we did when we were inches away from Jan getting a hat-trick before their outstanding keeper Alan Knight saved with his legs in the dying minute which would have earned us a draw after being 4-1 down. We must get our away results better and aim to put that right.

To today's game I welcome my old friend and ex-Spurs team-mate Pater Taylor with his well respected assistant Theo Foley. They have done a great job in getting their team right up the League into 8th position after a bad start. I also want us to keep Ricky Otto quiet as I know him well from my time at Leyton Orient.

This will be a very emotional day but we want to remember it with happiness as Kevin would want that.

OFFICIAL SPORT DRINK OF
SWINDON TOWN FC

Lucozade
SPORT

For low cost Motor Insurance... ...we're in a League of our own



PHONE NOW ON



Endsleigh

Tel: 0793 512622

107A Commercial Road, Swindon



matchday

The official magazine of the Endsleigh Insurance League

**SPECIAL SUPPORTERS SUBSCRIPTION OFFER!
14 ISSUES FOR THE PRICE OF 12!!!**

For Divisions One, Two and Three and football at its very best, read *Matchday* magazine. Packed with action, news and comment it is essential reading from Sunderland to Swindon, Swansea to Southend. Take out a subscription today. Contact Ian Allan Publishing, Select Subscriptions Ltd, Northbridge Road, Berkhamsted, Herts HP4 1ST. Tel: 0442 876661 or Fax: 0442 872279. Please make cheques for £26.40 payable to Ian Allan Publishing. Access/Visa accepted

matchday FOR FULL COVERAGE OF THE
ENDSLEIGH INSURANCE LEAGUE

THIS IS SWINDON

With **Jon Pollard - Club Secretary**

SPONSORED BY



PART OF THE
TELECENTRAL GROUP

&

PHH

With Southend United our visitors this afternoon we are pleased to be able to welcome to The County Ground the players, officials and supporters from Roots Hall for today's Endsleigh League fixture.

Endsleigh League

Our next two Endsleigh League games are away from home. Next Saturday we travel to the North East when we take on Bryan Robson's Middlesbrough at Ayresome Park and this is followed by the trip to meet Bolton Wanderers at Burnden Park on Tuesday 1 November where the kick off is at 7.30pm.

Our next home Endsleigh League game is on Saturday 5 November when we entertain Millwall kicking off at 3.00pm. Tickets for this all ticket game are now on sale from the Advance Ticket Office.

Avon Insurance Combination

Next Monday evening Norwich City arrive at The County Ground in the Avon Insurance Combination. Kick off is at 7.30pm. This game was originally scheduled for next Wednesday but has been brought forward two days to avoid a clash with the Coca-Cola Cup tie at Brighton. No new date has been set for the game postponed last week against Bristol City.

City Cup Tie

Bristol City beat Southend United in their outstanding Southern Junior Floodlit Cup replay last week at Ashton Gate and we now face City here at The County Ground in the second round. The game is to be played on Wednesday 16th November kick off 7.30pm.

Coca-Cola Cup

This coming Wednesday evening we play our Coca-Cola Cup third round tie against Brighton & Hove Albion at The Goldstone Ground kicking off at 7.30pm. The tie is all ticket and supporters must buy tickets from us prior to travelling. Seat tickets are available price £8 each (concessions £4) with terrace tickets £6 (£3 concessions). If the game is drawn the replay will be at The County Ground on Wednesday 9 November kick off 7.45pm. Season Ticket holders will have from next Thursday until 6.45pm on Friday 4 November to claim their tickets. Cup voucher B should be produced with the remittance when booking. Postal applicants please also include a stamped addressed envelope.

Reduced Seasons

With the season just a third of the way through we now have Season Tickets on sale at reduced rates from the Advance Ticket Office. A Season Ticket not only guarantees you your seat for all Endsleigh League fixtures at The County Ground but also gives priority booking for home Cup ties and free admission to home Avon Insurance Combination games. In addition it saves having to book tickets every game. For further details of availability and prices please contact the Ticket Office on Swindon (01793) 529000.

**WIN
UP TO
£1000
AT HALF TIME**

**WITH THE
"ROBINS"**



**HALF-TIME
NEST EGG**

**TICKETS ONLY AVAILABLE ON
MATCH DAYS PRIOR TO KICK-OFF
AND ARE AVAILABLE ONLY TO
THOSE ATTENDING TODAY'S GAME!**

**WINNER WILL RECEIVE CHEQUE
STRAIGHT AFTER THE GAME FROM
THE LOTTERY OFFICE
(NEXT TO CLUB SHOP)**

**ALL PROCEEDS AFTER DEDUCTION
OF PRIZE MONEY AND EXPENSES
ARE A DONATION TO STFC
DEVELOPMENT FUND.
FUND REGISTERED WITH
THAMESDOWN BOROUGH COUNCIL.
PROMOTER D. HOLLISTER SWINDON TOWN F.C.**

BLOOR HOMES

**WISH SUCCESS TO
SWINDON TOWN F.C.
FOR THE
1994/95 SEASON**

BLOOR HOMES

making you feel at home

**FOR DETAILS OF OUR
DEVELOPMENTS IN
WILTSHIRE,
GLOUCESTERSHIRE,
AND AVON**

PHONE: 01793 513938

CHRISTMAS STARTS HERE

**At The Executive Suite
Swindon Town Football Club.**

**Lunches, Dinners, Dances,
and Private Parties.**

**Choose from a wide variety of
seasonal menus.**

**Telephone Graham Mulcahy
on Swindon (01793) 430430**

JOIN THE MOONRAKER CHASE TODAY



**UP TO
£1000
MUST BE WON
EVERY THURSDAY!**

MEMBERS MONTHLY DRAW

**PLUS VALUABLE DISCOUNTS
THROUGHOUT WILTSHIRE
ALL THE TIME!**

**PLUS FOR AS LITTLE AS 40p
A WEEK YOU CAN JOIN
WILTSHIRES' PRIME LOTTERY!**

**FAMILY PERMS AND WORK
SYNDICATES CAN BE ENTERED!**

**PICK UP A FORM TODAY FROM
RECEPTION, CLUB SHOP AND
PROMOTIONS OFFICE.**

SOUTHEND UNITED

By JOHN NOLAN



Dave Regis' first goal of the season, against Derby County last Sunday, secured Southend a valuable three points which shot them eleven rungs up the First Division ladder.

The Shrimpers at last seem to be finding their depth after a worrying opening to the campaign which saw them go six games without a win.

New boy Dominic Iorfa scored on the opening day at Millwall but the Lions roared back with three goals of their own to leave Southend well beaten.

There were no goals in the home leg of the Coca-Cola Cup tie with Watford and after losing 2-0 at home to Bryan Robson's Middlesbrough, United failed to score again in the return leg with Watford at Vicarage Road. The Hornets providing the sting 1-0!

The first really encouraging performance came at Luton where strikes from Dublin and Otto earned a share of the spoils in a 2-2 draw. But Peter Taylor's team were unable to build on that, losing 2-1 to Portsmouth at Roots Hall in the next fixture.

A 2-1 win over Bristol City was the start of a five match unbeaten run culminating in last Sunday's victory over Derby County. Bolton Wanderers were beaten 2-1 (Otto, Thomson); then a fine 1-0 win at Sunderland (Thomson) was followed by a goalless draw at Barnsley.



Back row: Daniel Foot, Andy Sussex, Andy Edwards, Keith Dublin, Paul Sansome, John Cornwell, Simon Royce, Dominic Iorfa, Mark Hone, Graham Bressington, Phil Gridelet.

Middle row: Danny Greaves, Ijah Anderson, Gary Poole, Steve Tilson, Mick Bodley, Chris Powell, Declan Perkins, Gary Jones, Craig Davidson, Mark Hall, John Gowens.

Front row: Andy Ansah, Andy Thomson, Keith Jones, Theo Foley, Vic Jobson, Peter Taylor, Ricky Otto, John Hunt, Joe Martin.

SOUTHEND UNITED ABC



GRAHAM BRESSINGTON - Defender. Strong competitor signed from Lincoln City for a bargain £50,000 in the summer of 1993. Became a firm favourite with the fans last season. Lincoln spotted him playing for Wycombe Wanderers and he made over 100 appearances for The Imps. Born: Eton 8-7-66.

JOHN CORNWELL - Midfield. John made six appearances in our colours in season 1988-89, before moving to Southend for £45,000. Served his apprenticeship with Leyton Orient, (202 League appearances), following his debut at Norwich in May 1982. In the summer of 1987 he was signed by Newcastle United and played in 33 games. Spent a fair part of last season on loan. Born: Bethnal Green 13-10-64.

KEITH DUBLIN - Defender. Joined Southend in the summer of 1994 as part of a swap deal that took Derek Payne to Watford. Keith had been the strong-man in the Hornets defence for four years playing in the centre of the back-line, in both fullback shirts, and as a sweeper. A former England Youth International he trained as a youngster at both Watford and Chelsea and chose to sign for the Blues. Made 51 League appearances for Chelsea before drifting to Brighton who received £275,000 when he joined Watford in 1990. Born: Wycombe 19-1-66.



DOMINIC IORFA

ANDY EDWARDS - Central Defender. Joined the club from school and has now established himself as a firm favourite after making the breakthrough into senior football in season 1991-92. Particularly effective in the air "Eagle" is expected to soar to even greater heights. Born: Chigwell 17-9-71.

PHIL GRIDELET - Midfield. A bit of a runner this lad with the ability to get from box to box. Was playing for Barnet when Barnsley paid £175,000 for him three seasons ago. "Grids" is a former semi-professional England International and is a determined competitor. Joined Southend last season. Born: Edgware 30-4-67.

MARK HONE - Defender/Midfield. A versatile performer who can virtually play in any outfield position. Signed just before the start of the 1994-95 season for £50,000 from non-League Welling. This is his second spell with a League Club having been with Crystal Palace before joining Welling.



RICKY OTTO

DOMINIC IORFA - Striker. Snapped up for a bargain £15,000 from Peterborough United in the summer. Dominic is a Nigerian International with 22 caps. He has blistering pace and a reputation for scoring spectacular goals. Was on Antwerp's books before joining QPR but was unable to establish himself there and left Loftus Road for Turkish side Galatasaray in January 1992. Born: Lagos 1-10-68.

RICKY OTTO - Striker. Top shot last season following a £100,000 move from Leyton Orient. Started his career with Dartford and made one League appearance in 1990-91. Established himself in the Orient side the following year with five goals in 32 League games. Born: London 9-11-67.

GARY POOLE - Right Back. Was a record signing from Plymouth Argyle in the close-season of 1993 but had a mixed first season at Roots Hall.

SOUTHEND UNITED ABC



CHRIS POWELL - Left Back. Established himself in the number three shirt three seasons ago and was Southend's Player of the Year last season. Rated highly he came into the game with Crystal Palace on the YTS and made the first of his three appearances for the Eagles v Barnsley on November 5, 1988. Born: Lambeth 8-9-69.

DAVID REGIS - Striker. Has had quite a season. In August 1994 Birmingham City manager Barry Fry bought David from Stoke City. A couple of weeks later he transferred him to his former club Southend United, together with Roger Willis, as part of the deal that took Jon Hunt to St. Andrews'.

SIMON ROYCE - Goalkeeper. Arrived at Roots Hall from local club Heybridge, for £10,000, three seasons ago. Provides cover for first choice Paul Sansome and has proved a sound custodian when called upon to deputise. Made his League debut in a 3-1 win over Grimsby 28-3-92. Born: London 9-9-71.

PAUL SANSOME - Goalkeeper. Former Millwall apprentice who made his League debut for the Lions in a goalless draw with Swindon at the old Den, in March 1982. Played 156 League games for Millwall before transferring to Southend for £50,000 in 1987-88 after a loan spell at Roots Hall. Born: North Addington 6-10-61.



ANDY THOMSON

ANDY THOMSON - Striker. A £250,000 summer signing from Queen of the South where he enjoyed a tremendous scoring record in the Scottish League. Was anxious to come south and become a full-time professional.

STEVE TILSON - Midfield. Picked up from Witham Town he made a big impact on the left of midfield scoring 19 goals in his first two seasons of League football as Southend climbed from the Fourth to the Second Division. Lost his way a little after that but recaptured his form in the second half of last season. Born: Wickford 27-7-66.

ROGER WILLIS - Midfield. A left-sided player who is equally at home in a forward position. "Harry" has settled in quickly following his move from Birmingham City in September 1994, and his strength in the air has been a big bonus. Previously with Barnet and Grimsby Town. Born: Sheffield 17-6-67.

PREVIOUS MEETINGS

SWINDON TOWN v SOUTHEND UNITED

- HEAD TO HEAD

LEAGUE MEETINGS (92)

Swindon Town 40 wins Southend Utd. 30 wins 22 draws
Swindon Town 151 goals Southend United 127 goals
Swindon Town at home - wins 30 losses 6 draws 10
Swindon Town at home - goals for 99 goals against 39

CUP GAMES

1968/69	Home	0-2	L	FA Cup 3
1963/64	Home	3-0	W	League Cup 3
1950/51	Away	3-0	W	FA Cup 1

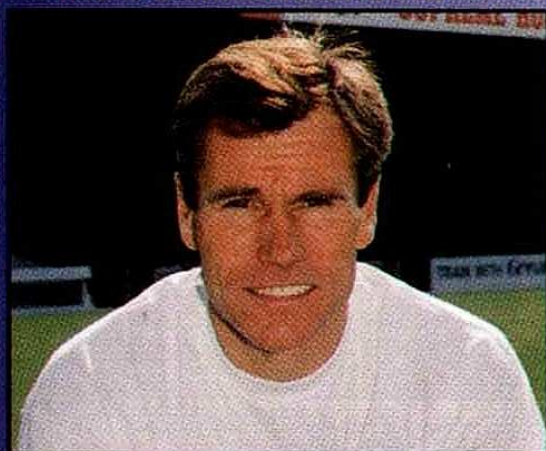
CUP MEETINGS (3)

Swindon Town 2 wins Southend United 1 win 0 draws
Swindon Town 6 goals Southend United 2 goals

OVERALL MEETINGS (95)

Swindon Town 42 wins Southend Utd. 31 wins 22 draws
Swindon Town 157 goals Southend United 129 goals

THE MAN IN CHARGE



Manager **Peter Taylor**

His first taste of management has proved a pretty turbulent experience even though he was well aware that stepping into Barry Fry's shoes, in December 1993, would be a hard act to follow.

The former England winger is best known for his playing days with Crystal Palace and Tottenham Hotspur, yet it was with his hometown club Southend United that he started his career in 1970.

Worked his way up through the apprentice ranks to make his debut in the season of 1970-71 and by 1973 had established himself as a special talent. Crystal Palace invested in his future in October 1973 (Peter had scored 12 goals in 75 League games for Southend), and over the next three years enhanced his reputation with some scintillating performances.

Such was his form that he was included in the England Under-23 team and then capped at full-level; playing the first of his four Internationals in 1976 against Wales.

In the autumn of 1976 big spending Tottenham Hotspur added him to their impressive squad and Peter's wing skills flourished alongside the likes of Glenn Hoddle and Steve Perryman.

Scored 31 goals in 123 League games for Spurs before joining Orient in 1980. Played four times for Oldham on loan (in 1982-83) before signing for Exeter City in 1983 and later drifting into non-League circles.

Assisted Steve Perryman when he became the manager at Watford.

Born: Southend 3-1-53.

UNDER THE SPOTLIGHT

Midfielder **Ronnie Whelan**

The football world was somewhat rocked when Ronnie Whelan refused to sign-on for Liverpool this season. The Republic of Ireland International had been dogged by injury over the past two years but on recovering he refused the offer of a one year contract claiming he wanted a better deal.

The upshot is that Southend United have now got themselves a class act for next to nothing following a short trial period.

The late, and great, Joe Mercer once said of Ronnie Whelan: "He reminds me very much of Peter Doherty, one of the greatest players I've ever seen or played against." That fitting tribute was made just after Ronnie had been acclaimed as the Robinson's Barley Water Young Footballer of the Year after the 1981-82 season - his first full season in the League.

Within four years the young Dubliner was already displaying European Cup, Milk Cup and League Championship winners' medals on his mantelpiece and of course since then the trophies have multiplied as he shared not only in some of Liverpool's greatest glories, but also in those of the Republic of Ireland too.

Yet Ronnie could so well have trodden another path. With the famous Dublin club Home Farm from the age of nine he came under the scrutiny of Manchester United, attending sessions at Old Trafford for three years, from the age of 14, during his school holidays.

But it was Liverpool who pounced and won the signature for him to become one of the great legends of Anfield. Equally at home in midfield or defence he is the supreme

competitor. Reads the game exceptionally well, has good vision and passing qualities, as well as an opportunists flair.

Was the Milk Cup match-winner for Liverpool in the finals of 1982 and 1983 but in '87 had the misfortune to score an own-goal that gave Arsenal the trophy.





ENDSLEIGH LEAGUE PREVIEW

There is no doubt who were the headline stealers last week. Yes, we have to take our hats off to unfashionable Luton Town who didn't just beat the League leaders Middlesbrough, but thrashed them!

It is doubtful if many believed the incredible scoreline as it came through on the teleprinter. Luton Town 5, 'Boro 1? It has to be the biggest upset since the USA beat England.

Good news though for the likes of us as we strive to make inroads on their lead. Wolverhampton Wanderers capitalised most, a hard fought 2-1 home win over Grimsby Town enough to give them a three point lead over Bryan Robson's team.

Today Wolves should add another three points to their collection as they play hosts to a Millwall side that is talented but young and far from happy on their travels where they have scored but two goals and claimed just two points.

Middlesbrough don't play until tomorrow, when they visit Fratton Park and a Pompey side heartened after their 4-3 win over us. Former Town player Alan McLoughlin did most damage with two goals while veteran goalkeeper Alan Knight denied Jan a deserved hat-trick with a blinding save in stoppage time. Could be hard work for the men from Ayresome Park.

Reading continue to surprise us all. It was a last minute goal from Gilkes which knocked the stuffing out of Russell Osman's Bristol City at Elm Park, just when they thought they had picked up their eighth away point of the season.

The Royals are now clearly in second place, just two points short of Wolves, and have home advantage again today when Sunderland are the visitors. There was disappointment at Roker Park last week where the second best gate of the division, nearly 18,000, saw the favourites held to a drab goalless draw by struggling Burnley. But Sunderland have a good away record with just one defeat blemishing their record and this could be a score draw.

On paper Tranmere Rovers should maintain their form against Watford but they will take heed that both Wolves and Middlesbrough have found it tough going at Vicarage Road. It was a John Aldridge hat-trick that sank West Bromwich Albion - the former Liverpool striker chalking up another personal milestone reaching 300 senior goals.

Sheffield United, at home for the second week running, take on Luton Town who must be the most improved team in the First Division. Manager David Pleat has once again worked wonders at Kenilworth Road and for those who think it will be a pushover for the Blades just take note of the "Hatters" away record. Three wins and two draws in six games.

The Oldham Athletic vs Stoke City game pits Joe Royle against Lou Macari. The Latics were in action at Bolton last Sunday; today they will be looking to boost their home record.

It seems to be win or bust for Oldham at Boundary Park with four wins and two defeats their record so far. Those six games producing 22 goals.

Grimsby Town, who have just taken Republic of Ireland Under-21 International goalkeeper Nick Colgan on loan from Chelsea, clash with Bristol City who have just resisted an offer of £500,000, from Coventry City, for central defender Mark Shail.

Finally, Charlton, impressive 2-0 winners at Vale Park last week, when David Whyte poached his 11th goal in 13 games, face Burnley at The Valley; while Port Vale will be looking to make amends in their home game against Bolton Wanderers.

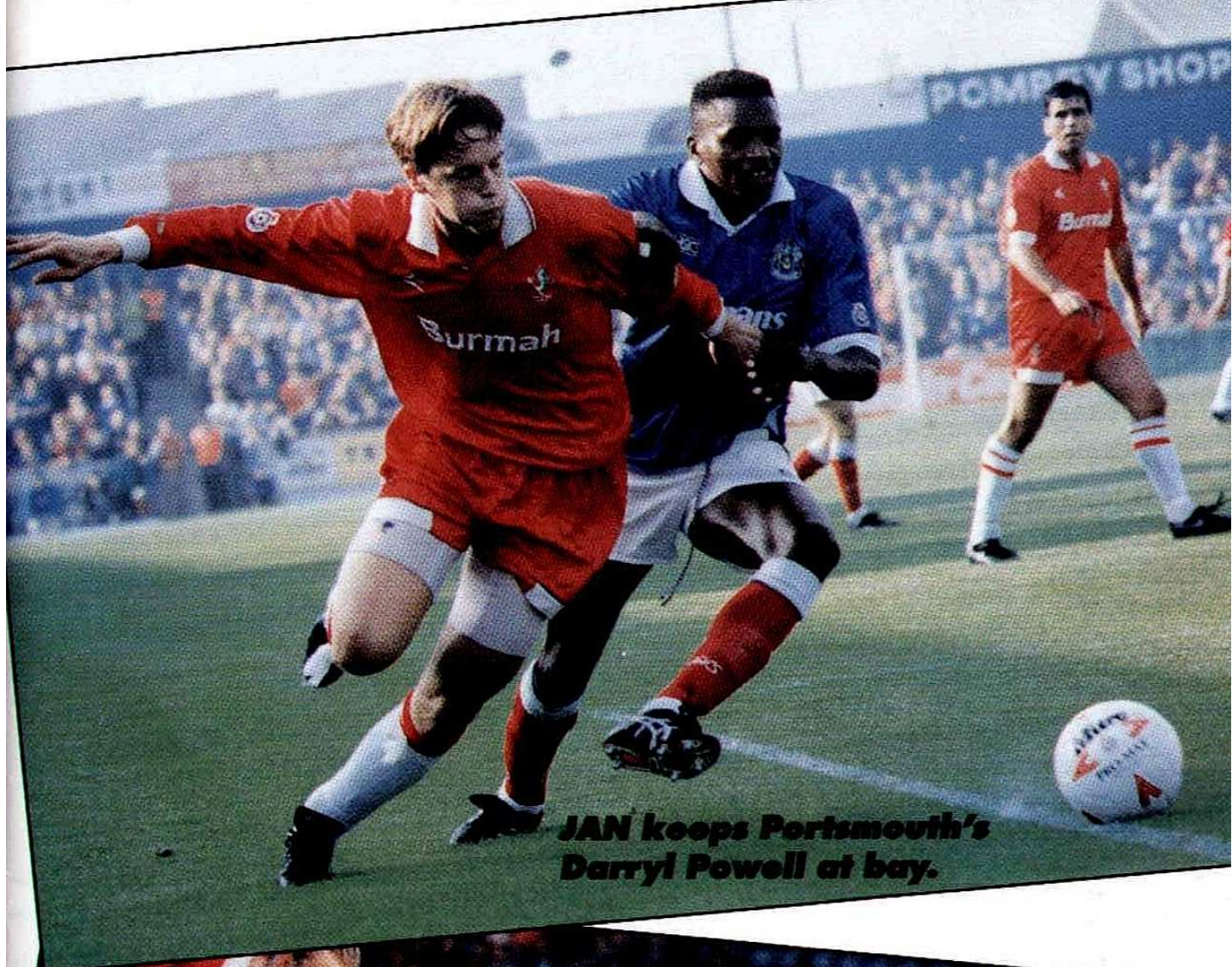


JOHN ALDRIDGE
- another scoring milestone.

MATCH

**KEITH SCOTT in aerial
battle at Portsmouth.**

ACTION



JAN keeps Portsmouth's Darryl Powell at bay.



BRIAN KILCLINE fires a shot against Mark Stimson.

Burmah Reward-your five pound score card!



SCORE £5 FOR YOU

What could be simpler?

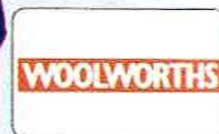
Collect points* on your REWARD card every time you buy fuel at a participating Burmah Station and we'll give you £5 vouchers to go shopping at B&Q, Comet, Woolworths or Superdrug - with thousands of exciting products to choose from.

SCORE £5 FOR THEM

Alternatively you can donate your REWARD points to one of two major charities - Age Concern or RSPCA. You can make an individual donation of £5 or you can collect with your friends or in a local group to really add up the points.

Score with your own REWARD card next time you visit a Burmah Station - the simple way to spend or give.

*20 POINTS FOR EVERY 5 LITRES OF FUEL 2,500 POINTS FOR A FREE £5 VOUCHER



For heating oil at
phone 0734 302101 for a free quotation
**heating
oil!**
competitive prices



Burmah



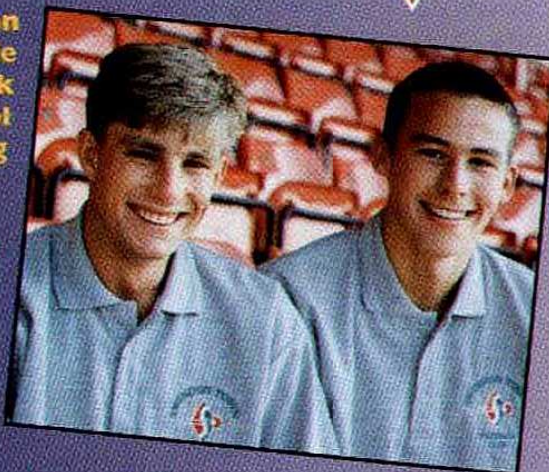
IN THE *With Jonathan Trigg* COMMUNITY



Welcome to all our guests seated this afternoon in the Town End Family Enclosure. They include the pupils, parents and staff from Freshbrook Junior School and St Mary's CE Primary School from Purton who are currently participating in our schools programme.

Also seated in the crowd are the runners-up in our recent 'Design A Christmas Card' competition. We hope that you all enjoy the match.

The Christmas Card Competition was a great success with the standard of entries extremely high. We finally decided on two winners, a boy and girl who are our mascots today as their prizes.



Congratulations to 12 year old Karen Hunt from Wroughton and Simon Jones (13) from Chippenham whose winning entries are on this page. Shane and I trust you will have a day to remember.

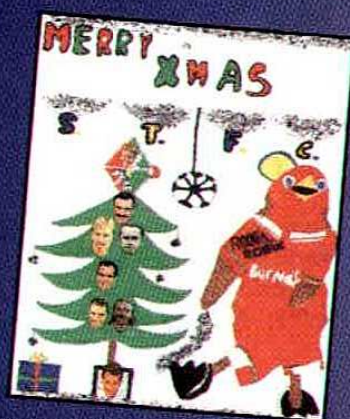
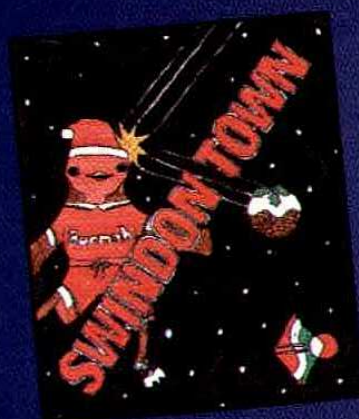
Finally our Half Term Fun Weeks begin on Monday. Unfortunately there are no further places available so please do not turn up on the off chance if you have not returned your application form.

Future courses are planned for the Christmas holidays so please apply now to save disappointment.



**LEARNING
THROUGH FOOTBALL**

Swindon Town's
'Learning Through Football'
Scheme sponsored by



**Christmas Card Competition Winning Entries
from Simon Jones (left) and Karen Hunt.**

SWINDON TOWN FOOTBALL CLUB'S COMMUNITY PROGRAMME IS KINDLY SPONSORED BY THE COMPANIES BELOW

THAMESDOWN
BOROUGH COUNCIL

Raychem

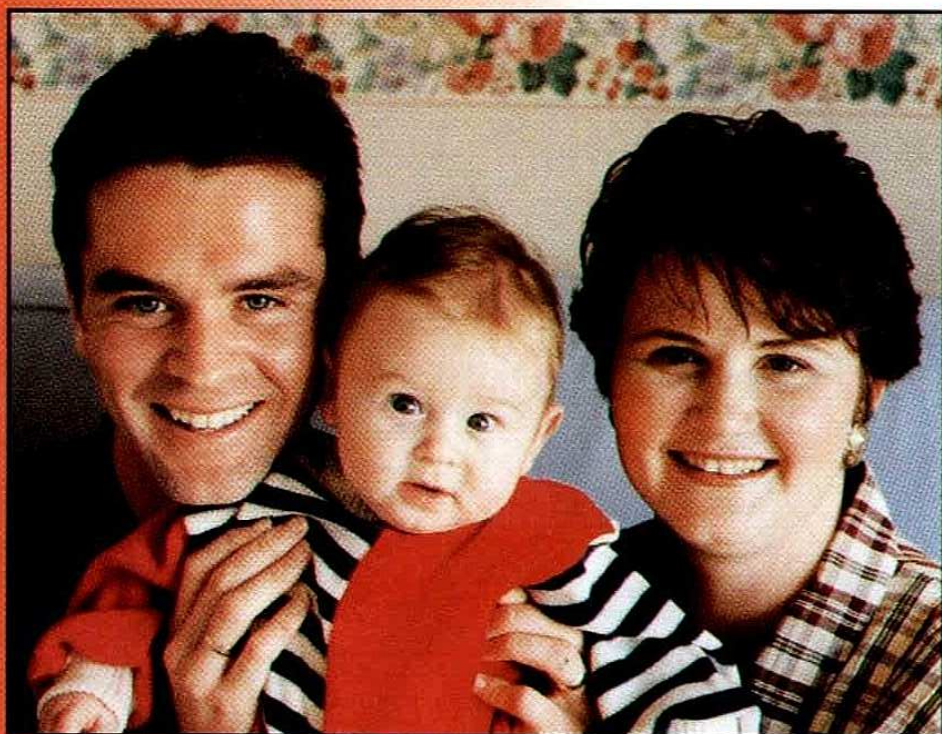


intel



Burmah

AT HOME *With* **ADI**



**Adi Viveash
with wife
Emma and
son Harley.**

Adi, he hates being called Adrian because he feels it is too formal and says "only my parents call me that," is a nice quiet home-town boy who has not enjoyed the best of luck over the past couple of years as serious injuries have kept him on the sidelines looking in.

However, the frustrations and distress surrounding the complications of a broken leg that has not healed properly have been somewhat offset by the Viveash's own little miracle, the birth of baby Harley in May.

Says Adi: "I can get back home after another day in which things haven't gone as well as I would like and look at Harley. It just takes one smile to put all my troubles into perspective."

Fatherhood has certainly drawn Adi out of his shell. A quiet lad who appreciates the comforts of home he has now set up camp at Peatmoor with wife Emma, in a three bedroomed detached house on a new estate.

Says Adi: "We have been here since March and love it. We lived at Sparcells before and this is just the other side of the Chinese Experience. Just two minutes away from our old home virtually."

"We are still getting things straight. It is a quiet area normally though since we moved in they have been busy building more houses about us so it has been quite noisy at times."

A new house, a new beginning, but what if anything, reflects Adi's personality?

"Nothing," he says. "It hasn't got my stamp on it at all. We are still settling in as I say but I suppose if you walked in the door you would get a good idea of what sort of person my wife is. There is a lot of colour and detail to the decor of rooms and so on."

"Emma has done most of the rooms herself. She is good at wallpapering and painting. I just let her get on with it. No, it is true she really enjoys that sort of thing. I just cut the grass."

"Being a new plot the garden area was a bit of a mess when we took over. But we turfed the back garden and that was a job in itself. I used to spend an hour and a half hosing it every night to get it to knit together. It is looking better now."

"I quite like getting out there with the mower. It is an hour of relaxation really. A time when you lose yourself from the world."

"We also have a dog and a cat. When I was a lad we never had pets at home but Emma was brought up with them. We have a West Highland Terrier who likes digging up the garden and generally being a nuisance."

With the next-door neighbours being keen gardeners there is plenty of advice on hand should it be required. Says Adi: "He is a keen football fan as well so we have something in common. They are nice people."

VIVEASH

By COLIN BENSON

In keeping with most footballers, it seems, DIY comes bottom of Adi's list of accomplishments. "I'm useless with my hands," he pleads. "My father-in-law gives us a lot of assistance in this respect. I learned to wash-up."

"Emma and I have been together for four years. We came to an agreement. She would cook and I would wash-up. I'm quite good at it now."

"Since the baby came we don't get about so much. We used to go out a lot for meals at various pubs but now we generally stay in, have a bite to eat, a glass of wine, and watch the telly."

"I watch a lot of sport of course and we are Soap buffs as well. You name them we watch them. The Aussie sagas, EastEnders, Brookside and a new one we have become acquainted with on Sky, 'E Street.' It was from this that we got the name Harley. A lot of people think it is to do with Harley Davidsons but I don't like motorbikes. But there is a character in this TV programme with the name which we felt was different."

"I really enjoy being a Dad and am very fortunate in my line of work because we get a lot of time to spend with the family. I can be with Harley as he is growing-up unlike most fathers who are away at work till late."

While Emma keeps in trim with her weekly keep-fit class the main concern in the Viveash household remains Adi's recovery to health. It is over eleven months since he broke the lower part of his leg, just above the ankle, in a reserve game against Arsenal, and he was hoping to be fit for the start of this season.

Explains Adi: "I came in to work on it every day in the summer and was pleased with the progress. I seemed to be fully recovered but then took a whack on it in a pre-season game in Cyprus and was back in trouble."

"It was not broken again but they located a crack in the bone which had not healed first time round and so this is what we are working on now."

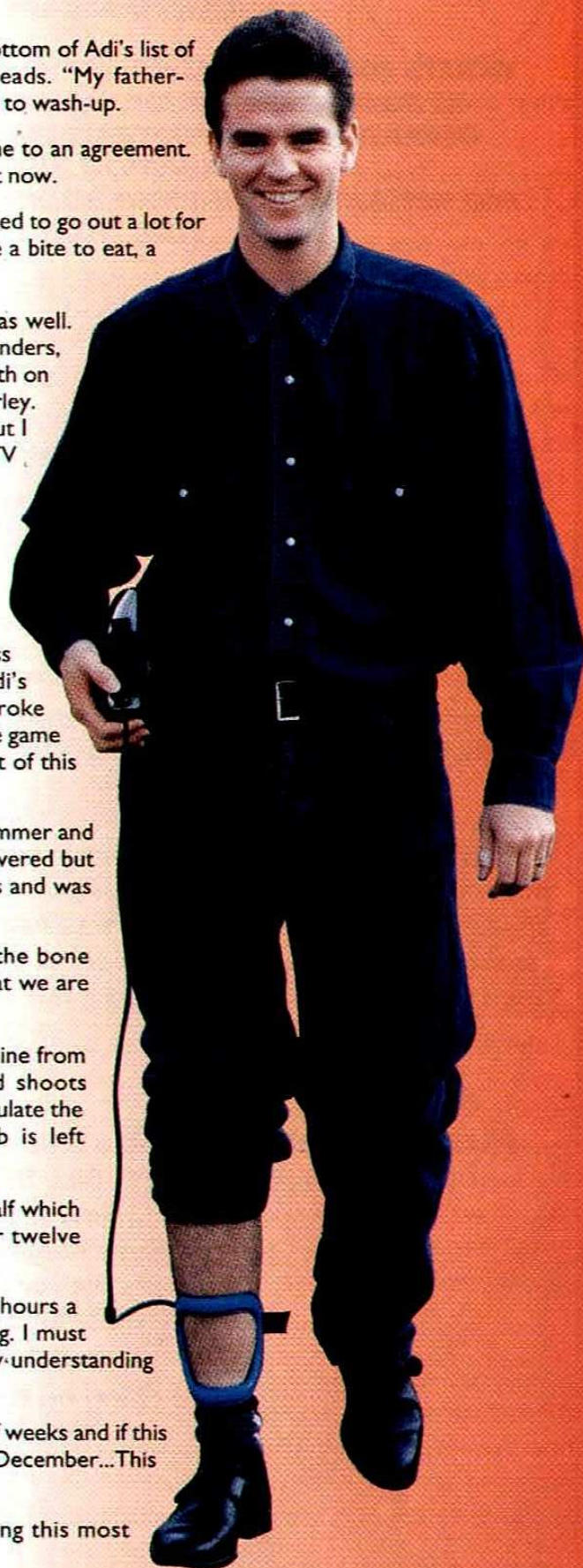
"I am trying to speed things up with a special bone-machine from America. It comprises a coil that fits on the leg and shoots electrodes round the break. The idea is that this will stimulate the production of calcium much quicker than if the job is left to nature."

"They say it will cut the time of the healing process in half which is encouraging. It means instead of looking at another twelve weeks I am now aiming for six."

"The contraption has to be strapped to the leg for ten hours a day but I am willing to try anything to get back to playing. I must thank the Board for their support. They have been very understanding and are paying for the hire of this machine."

"If all goes well I hope to start training again in a couple of weeks and if this is so then I shall be looking to play some sort of game in December...This is my main aim at the moment."

Everyone is keeping their fingers crossed for Adi during this most crucial chapter of his professional career.





**TICKETS FOR ALL HOME GAMES IN THE NEW INTEL STAND CAN NOW
BE BOOKED ON THE ENDSLEIGH LINE - A NEW SERVICE BEING
OPERATED BY THE FOOTBALL LEAGUE AND SWINDON TOWN IN
CONJUNCTION WITH TICKETMASTER.
FOR INSTANTLY CONFIRMED BOOKINGS USING AMERICAN EXPRESS,
VISA, ACCESS AND DELTA**

TELEPHONE:

0645 101010

24 hours a day, seven days a week.

*Customers will be charged an additional £1.50 per ticket together with a
transaction charge of £1.25 per booking.*

Bookings can also be made at the Ticketmaster Ticket Centres at:

**44/46 Cornmarket Street, Oxford,
138/141 Friar Street, Reading
or any Ticketmaster Ticket Centre at HMV or Tower Records**

SPONSOR A SWINDON TOWN GOAL

This is a new and exciting opportunity to have your name appear in every home matchday programme. 'So put your money where your mouth is' by sponsoring £5, £2 or £1 for each LEAGUE GOAL scored during the 1994/95 season. To give you an idea of what your commitment could be Swindon Town have scored 47, 69 and 74 goals during each of the last three seasons.

£5 A GOAL

Mark Ward

£2 A GOAL

**Colin J Bale & Sons Ltd
SAS Travel
Bass Brewery
Silver Knight Coaches
Trevor Witts
Mr D W Spurling
D and P Gosling
'Man on the Mike'
Pete Lewis**

£1 A GOAL

**Dangerfields of Swindon
Miss N Young
The Princess Hotel
Mr Hugh Barnett
Shaun Platt
Darren Platt
Paul Spearman
Mrs O J Spearman**



TO SPONSOR A SWINDON TOWN GOAL CALL THE COMMERCIAL DEPARTMENT - 01793 430430



BENNO

After England had moved from the Age of Disney to the Age of Reality, we were left with a much clearer picture of our standing in world football.

The victory over the USA was nothing more than a cosmetic appeasement to the fans. Romania on the other hand provided a truer barometer of our development under Terry Venables.

Alas, it seems we are some way short. Romania on the night were far superior in almost every facet. Their technique with the ball and the interchanging of players something the English could not match.

It seems too that Mr. Venables is falling into the same trap that has snared all England managers since Joe Mercer. A fear of losing individual games.

Before the Romania game we were even issued with an official Press Release containing a table comparing the records of all England managers over their first four games in charge. Perhaps you will be interested to see it? It was as follows:

	P	W	D	L	F	A
Winterbottom	4	4	0	0	19	4
Ramsey	4	1	1	2	8	10
Mercer	4	2	1	1	5	4
Revie	4	3	1	0	10	0
Greenwood	4	2	1	1	5	2
Robson	4	2	1	1	15	5
Taylor	4	3	1	0	6	1
Venables	4	3	1	0	8	0

Somewhat ironic I suggest that the most successful manager ever, Sir Alf Ramsey, should have the worst start. Yet perhaps that is significant.

Ramsey was very specific in his intentions. He utilised 21 different players in his first four selections as he sought the combination that would justify his claim that he would win the World Cup. It was an immediate process of selection and elimination with the emphasis clearly on establishing a balanced combination rather than achieving results.

Venables, I fear, has allowed himself to be caught between two stools. While trying to sift out the players he wants he also has one eye on the scoresheet. He seems too intent on getting a result. Why else would he persevere with Ian Wright?

Surely the Arsenal striker has had his chance. The Romania game was his 20th cap. Goals scored? Five. Four of them against San Marino! Some record. I can see defenders from Munich to Moscow trembling in their boots.

So why did Terry play the 30 year-old against Romania? The only logical conclusion I can come to is that he wanted Wright's whole-hearted running power between the two areas. In other words Wright was in the team more for his defensive qualities - his willingness to track back and help his defence - than for his attacking ability.

Thus Wright, instead of King Cole of Newcastle (he will probably be Old King Cole by the time he is recognised and given an England shirt); and the likes of Chris Sutton (Shearer's club partner in goals); Steve McManaman and maybe even Stan Collymore, is given a game at the expense of experiment. The manager erring on the side of caution rather than adventure.

Now is the time to find out who can and who can not come to terms with International football. Now is when the pretenders should be given the opportunity to stake their claims and hang the results. The summer of 1996 is all that matters and England deserve a team to do us proud in those European Championships.

One note of optimism was the performance of Matthew Le Tissier even if his selection was forced by press pressure. The Saints captain showed some wonderful touches and given a run could become the best touch player we have seen in an England shirt since Glenn Hoddle.

ANNUAL FEE: NIL



- The Swindon Town Football Club Visa Card has **No Annual Fee**
- You pay reasonable interest rates – just **17.9%APR** (variable) for purchases
- You can chop the interest you pay on your credit card down to just **13.9%APR**, fixed for six months
- Plus there's a comprehensive collection of financial benefits – at no extra charge

Are you scoring an own goal by paying an annual fee for an ordinary credit card...? You could be showing your support for Swindon Town FC on and off the pitch with the Swindon Town FC Visa Card — a credit card with **no annual fee**.

Not only will you be showing your support, you really will be giving it, too. For every accepted cardholder, MBNA International, the bank that issues the card on our behalf, will pay us a royalty. Then every time you make purchases with your card, a percentage of the total transaction value goes to our funds. You'll be an official Swindon Town FC sponsor — at no extra cost to you!

Which would you prefer to carry: a card that supports only the bank that issues it... or one that gives valuable financial assistance to your favourite football club?

Loyal Swindon supporters are already switching to the Swindon Town FC Visa Card. If you care for your club, you should too — without delay.

Get a FREE information pack now:
Please quote reference BT29

0800 776262

Lines are open 24 hours a day,
7 days a week.

☒ Please rush me more information about the fee-free Swindon Town FC Visa Card.

Name: _____

Address: _____

Postcode: _____

Telephone: _____

Daytime (_____) _____

Evening (_____) _____

Please return to: MBNA International Bank Ltd,
PO Box 1048, FREEPOST, Chester CH4 9ZZ.

BC29

If you don't want to cut your programme, simply call on the freephone number, or write to MBNA at the address above.

The Swindon Town FC Visa card is issued by MBNA International Bank Ltd, Stamford House, Chester Business Park, Chester, CH4 9YZ. MBNA Visa card interest rates are **17.9%APR** (variable) for purchases, **13.9%APR** for balance transfers and cash advances, fixed for six months from the date your account is opened. The **13.9%APR** is calculated by applying the monthly rate of 1.09% throughout the period of credit. After the six month period it reverts to the same variable interest rate which applies to such card purchases at that time (currently 1.38% per month, **17.9%APR**). Both APRs are calculated on a fee exclusive basis, and assume a credit limit of £1,000 for a standard card and £3,000 for a gold card. The minimum monthly payment is just 2% of the outstanding balance (minimum £5). There will be no handling charge for cash advances until after your account has been open six months. After that date a handling charge of 1% (variable) (min £1, max £25) will apply. Credit is available subject to status, only to persons aged 18 or over. Written quotations available on request.



MARKETING NEWS

With

Phil Alexander

A warm welcome to this afternoon's fixture from the Marketing Department.

MATCHDAY SPONSORS

It gives us great pleasure in welcoming a party from Honda UK for the first time as Matchday Sponsors. Honda are no strangers to the County Ground. Not only have we had a long standing relationship with Honda, but Swindon is Honda's European manufacturing base, producing the highly successful Accord and the new Civic 5-door recently launched at the Birmingham Motor Show. Still celebrating their historic association with the Football League, Honda are now the Official Car Supplier, the first motor manufacturer sponsorship in the League's 106 year history. We welcome all from Honda here today, including the regional dealers who not only supply the superb range of Honda cars, but also provide those lucky enough to own one with award winning after sales car service.

COMMITMENTS PLAY IN TOWN AID FINALE

Town Aid '94 will officially draw to a close on Sunday 11th December 1994 when stars from 'The Commitments' will play Swindon's Link Centre, with all proceeds going to Swindon Town Football Club. The Concert has been organised by Andy Cotton, the band's Manager, who lives in Swindon and is an avid 'Town' fan. To add to the entertainment Jan Aage Fjortoft will join the band on stage during the concert and will sing with them. This is an event not to be missed by any Swindon Town or Commitments fan.

Ticket numbers are limited and are now on sale from the Link Centre, Swindon Town Football Club or any of the Evening Advertiser offices, only £11 in advance or £13 on the door.

SWINDON TOWN CREDIT CARD LAUNCH

You may have already seen a number of Clubs who have their own credit card. We are pleased to inform you that you can now have your very own Swindon Town FC credit card. As well as all the excellent benefits shown opposite, every time you use the card for your usual day to day purchases, the Club will benefit at no extra cost to yourself. Apply now by picking up an application form at Reception or by ringing the Marketing Department on Swindon (01793) 430430.

SWINDON TOWN SUPERSTORE

We are delighted to announce that the new Club Shop Superstore situated on the corner of the Intel Stand and Town End Stand is now open for business, so look out for special opening offers. See page 28 for further details.

TODAY'S LUCKY MASCOTS



Aaron Webb aged 6 on 12th October is from Park North in Swindon. Aaron attends Park North Primary and enjoys playing football. He is also a member of the Junior Robins Supporters Club. His favourite team apart from Swindon is Tottenham Hotspur and his idol is Darren Anderton.

Our other mascots today are winners of the Community Office 'Design a Christmas Card Competition'. The entries were of such a high standard that we had two winners, they are;



13 year old Simon Jones from Chippenham. Simon attends St Gregory's in Bath and enjoys drawing and fishing. His favourite players are Fraser Digby and Jan Aage Fjortoft.



Karen Hunt is 12 years old and from Wroughton near Swindon. She attends Ridgeway School and enjoys playing netball, badminton, watching Swindon play and watching TV. Her favourite player is Jan Aage Fjortoft.

OUR CORPORATE SUITE SPONSORS



SELECTABOOK LTD
BARGAIN BOOKS WHOLESALE

BCA



KIT SPONSORS



SHAUN TAYLOR



FRASER DIGBY



KEITH SCOTT



PAUL BODIN



BRIAN KILCLINE



NICKY HAMMOND



MARCUS PHILLIPS



MARK ROBINSON



LUC NIJHOLT



ANDREW THOMSON



JOEY BEAUCHAMP



MARTIN LING



WAYNE O'SULLIVAN



ANDY MUTCH



JAN AAGE FJORTOFT



AUSTIN BERKLEY



JAMIE PITMAN



EDWIN MURRAY



KEVIN HORLOCK



BEN WORRALL



TY GOODEN



CHRIS HAMON



ADRIAN VIVEASH



STUART JAMES



JOHN GORMAN



ANDY ROWLAND



ROSS MacLAREN



JOHN TROLLOPE

1. Shirt £90.00 2. Shorts £60.00 3. Socks £35.00 4. Boots £75.00 5. Tracksuit £75.00 6. Training Shoes £60.00
WHOLE KIT SPONSORSHIP £330.00

WHERE ARE THEY NOW?

Andy Ford

By **PAUL PLOWMAN**

What do former Town stars Andy Ford and Don Rogers have in common?

They were both born in Somerset, both have played in the same team as current Southend manager Peter Taylor - and they both now run a successful sports trophy business.

Andy comes from Minehead and played for the local Western League club before being invited to sign for Bournemouth by John Bond. "I was too old to be taken on as an apprentice but I served my apprenticeship, as it were, in the Reserves", he said.

In the following May, Andy joined Southend and made his League debut on the opening day of 1973/74 at Blackburn. Others at Roots Hall at the time included big Chris Guthrie and little Dave Cunningham who, along with Andy, signed for Swindon within weeks of each other during the summer of 1977.

After a couple of appearances on the bench, Andy made his first full appearance for the Town against Chesterfield on September 10th 1977, celebrating his call-up with the winning goal in a 2-1 victory. He had previously managed a goal a season, but this proved to be his only one in three years at the County Ground.

He was in and out of the side during the first season but Bob Smith took over from Danny Williams in 1978 and Andy took over from John Trollope at left-back. Andy became an ever-present as the Town missed promotion from the old Third

Division by just three points.

An early season injury forced Andy to sit out much of 1979/80, although he did take part in an epic League Cup Fifth Round battle with Arsenal and an 8-0 drubbing of Bury within the space of eight traumatic days in the December. But Andy's cause was not helped when Mr Smith broke the club record transfer fee to sign left-back David Peach early in March.

Andy had to consider his position and chose to move on. "At that time in your career, if you're not in the First-Team, you have to go", he reflected. If his decision to leave was not surprising, perhaps his choice of clubs was.

There had been a good deal of bad feeling between Swindon and Gillingham at that time. Scuffles on and off the field, sendings-off, hate mail and even a court case did little to enhance relationships. And Andy admitted that it did act as something of a deterrent when he agreed to go to Priestfield in July 1980.

But his fears were dispelled straight away when he was appointed club captain, scored on his debut and finished 1980/81 as Gills' Player of the Year. Sadly, his playing career ended abruptly in

the following February, when, in a clash with Trevor Stephen at Burnley, he suffered torn cruciate ligaments.

Andy joined nearby Dartford, but after just three games it was clear that he could not continue playing. Fortunately, during his career he had laid the foundations for pursuing business interests outside the game. "A colleague at Southend got me into trophies and sports equipment. At Swindon I used to sell to local clubs from the front room at home".

Andy, now 40, has become self taught in both computerised and hand engraving and employs three others in a small factory unit he has purchased in Maidstone.

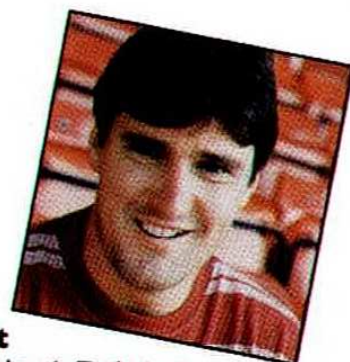


Andy Ford

Main Sponsor  **Burmah**

RESERVES REVIEW

With
Ross MacLaren



AVON INSURANCE COMBINATION DIVISION I

Tue 16 Aug	Crystal Palace	A	2-1
Wed 31 Aug	Watford	A	0-1
Sat 03 Sep	Arsenal	A	0-0
Wed 14 Sep	Norwich City	A	0-7
Wed 28 Sep	BRIGHTON & H.A.	H	7-3
Mon 03 Oct	Bristol City	A	1-8
Mon 10 Oct	IPSWICH TOWN	H	1-1
Mon 17 Oct	Bristol Rovers	A	1-0
Mon 24 Oct	NORWICH CITY	H	
Mon 31 Oct	LUTON TOWN	H	
Wed 02 Nov	OXFORD UNITED	H	
Wed 09 Nov	CRYSTAL PALACE	H	
Wed 23 Nov	Brighton & Hove Albion	A	
Wed 07 Dec	BRISTOL ROVERS	H	
Wed 14 Dec	Ipswich Town	A	
Wed 21 Dec	MILLWALL	H	
Wed 04 Jan	PORTSMOUTH	H	
Wed 11 Jan	WIMBLEDON	H	
Wed 18 Jan	Q.P.R.	H	
Wed 25 Jan	WATFORD	H	
Wed 01 Feb	CHELSEA	H	
Tue 07 Feb	Q.P.R.	A	
Wed 15 Feb	Oxford United	A	
Wed 22 Feb	Wimbledon	A	
Mon 27 Feb	Chelsea	A	
Mon 06 Mar	Millwall	A	
Mon 13 Mar	Charlton Athletic	A	
Wed 15 Mar	CHARLTON ATHLETIC	H	
Tue 21 Mar	SOUTHAMPTON	H	
Wed 29 Mar	TOTTENHAM HOTSPUR	H	
Mon 03 Apr	Portsmouth	A	
Wed 12 Apr	Southampton	A	
Tue 18 Apr	West Ham United	A	
Wed 26 Apr	ARSENAL	H	
Tue 02 May	Tottenham Hotspur	A	
Tue 09 May	WEST HAM UNITED	H	
TBA	BRISTOL CITY	H	

All home games are played at The County Ground, Swindon and kick-off at 7.30pm.

After the disappointment of the previous game against Bristol City at Ashton Gate, the lads came back with one of the best displays of the season last week when Ipswich Town came to the County Ground in the Avon Insurance Combination even though the scoreline did not do us justice.

Taking the lead after just three minutes Kevin Horlock played a great ball down the left for Jamie Laidlaw who beat Ipswich's off-side trap and ran on to beat the Town keeper with a crisp right foot shot.

We defended well throughout the game and passed the ball about creating several good chances.

We came out in the second half in the same vein as we began the first - not giving Ipswich much chance of scoring past our keeper Nicky Hammond - making his return from injury having missed the Bristol City game.

As we reached the ninetieth minute we thought that we had the three points in the bag but gave away a penalty which Ipswich duly converted.

After all the hard work we put in controlling the game in the end we had to make do with a share of the points.

Result:

**Avon Insurance Combination
Swindon Town 1 Ipswich Town 1**

Scorer: Laidlaw

Team: Hammond, James, Elsey, Berkley, Kilcline, Murray, Worrall, Phillips, Hamon, Laidlaw, Horlock. **Subs:** Reeves, Fraser.

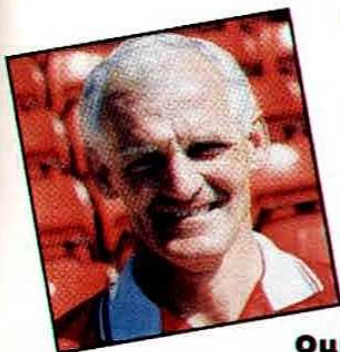
AVON INSURANCE COMBINATION DIVISION I AS AT 09 OCTOBER 1994

	P	W	D	L	F	A	Pts
Norwich City	10	6	3	1	29	12	21
Charlton Athletic	9	7	0	2	18	9	21
Tottenham Hotspur	9	5	2	2	21	8	17
Crystal Palace	9	5	2	2	21	8	17
Southampton	9	5	2	2	20	13	17
West Ham United	9	5	1	3	14	12	16
Luton Town	9	5	1	3	12	12	16
Chelsea	9	3	5	1	19	12	14
Queens Park Rangers	9	4	1	4	23	11	13
Bristol City	8	3	2	3	18	17	11
Arsenal	9	2	5	2	14	16	11
Bristol Rovers	9	3	2	4	10	31	11
Watford	9	3	1	5	10	11	10
Wimbledon	9	2	3	4	8	12	9
Millwall	9	2	3	4	11	17	9
Swindon Town	7	2	2	3	11	21	8
Ipswich Town	9	1	4	4	12	16	7
Portsmouth	11	1	4	6	8	18	7
Brighton & Hove Albion	9	2	1	6	16	31	7
Oxford United	9	1	2	8	10	15	5



**Nicky
Hammond**





YOUTH TEAM IN FOCUS

With **John Trollope**

Our South East Counties League game at Bournemouth was just about our worst performance of the season so far as we went down by two goals to nil.

We started the game slowly and never showed the urgency needed to gain the necessary possession to dictate the pace of the game.

The application and effort given by the players was not good enough and too many of them were below par.

Jonathan Holloway put us ahead against the run of play when he scored from a loose ball following a set play. However Bournemouth were slightly the better side and equalised when they scored from a deflected shot.

Things did not improve after the break. Our movement and awareness both with and without the ball was not up to the standard expected.

With a draw looking the likely outcome to a scrappy game Bournemouth had other ideas and a minute from time the smallest player on the pitch was allowed a free header to score the winner.

Last Saturday at home to Tottenham Hotspur I think that things said after the previous game had taken effect for this was a much improved performance and thoroughly deserved victory winning 3-0.

Right from the start the effort and enthusiasm was better as we gained the upper hand. The first half was spoilt by some indifferent passing but we took the lead when Shaun Wimble headed in a Ryan Souter cross.

Having even more of the game in the second half with better passing movements we added to our tally with an own goal and the third from Jamie Laidlaw who finished off a Scott Medcroft pass.

Results:

**South East Counties League
AFC Bournemouth 2 Swindon Town 1**

Scorer: Holloway.

Team: Hamblin, Jordan, Souter, Thorne, Holloway, McCluskey, Medcroft, Harvey, Fraser, Laidlaw, Thomas. **Subs:** Pearce, Mildenhall.

**South East Counties League
Swindon Town 3 Tottenham Hotspur 0**

Scorers: Laidlaw, Wimble, o.g.

Team: Hamblin, Jordan, Souter, Holloway, Thorne, Thomas, Harvey, Medcroft, Fraser, Laidlaw, Wimble. **Subs:** Pearce, Coupe, Mildenhall.

SOUTH EAST COUNTIES LEAGUE DIVISION 2

Sat 13 Aug	Oxford United	A	2-3
Sat 20 Aug	BRISTOL ROVERS	H	5-2
Sat 27 Aug	Colchester United	A	2-3
Sat 03 Sep	WIMBLEDON	H	1-5
Sat 10 Sep	Brentford	A	3-1
Mon 12 Sep	Ipswich Town (S.J.F.C. 1)	A	1-0
Sat 17 Sep	Wimbledon (LC 1)	A	1-1
Sat 24 Sep	WIMBLEDON (LC 1R)	H	0-2
Sat 08 Oct	AFC Bournemouth	A	1-2
Sat 15 Oct	TOTTENHAM HOTSPUR	H	3-0
Tue 18 Oct	NOTTM. FOREST (MYC 1)	H	
Sat 22 Oct	Wycombe Wanderers	A	
Sat 29 Oct	Crystal Palace	A	
Sat 05 Nov	WYCOMBE WANDERERS	H	
Sat 12 Nov	Brighton & Hove Albion	A	
Wed 16 Nov	BRISTOL CITY (S.J.F.C. 2)	H	
Sat 19 Nov	LUTON TOWN	H	
Sat 03 Dec	Reading	A	
Sat 10 Dec	SOUTHAMPTON	H	
Sat 17 Dec	Southampton	A	
Sat 31 Dec	OXFORD UNITED	H	
Sat 07 Jan	Bristol Rovers	A	
Sat 14 Jan	COLCHESTER UNITED	H	
Sat 21 Jan	Wimbledon	A	
Sat 28 Jan	BRENTFORD	H	
Sat 04 Feb	Bristol City	A	
Sat 18 Feb	AFC BOURNEMOUTH	H	
Sat 25 Feb	Tottenham Hotspur	A	
Sat 04 Mar	CRYSTAL PALACE	H	
Sat 18 Mar	BRIGHTON & H.A.	H	
Sat 25 Mar	Luton Town	A	
Sat 01 Apr	READING	H	
TBA	BRISTOL CITY	H	

All home games are played at The Allied Dunbar Training Centre, Wanborough, and kick-off at 11.00am

SOUTH EAST COUNTIES LEAGUE DIVISION 2 AS AT 15 OCTOBER 1994

	P	W	D	L	F	A	Pts.
Crystal Palace	9	7	1	1	21	8	15
Wimbledon	7	6	1	0	37	9	13
Oxford United	9	6	1	2	21	9	13
Luton Town	8	5	0	3	24	11	10
Bristol City	7	4	1	2	16	7	9
Tottenham Hotspur	9	4	1	4	19	12	9
Southampton	8	2	4	2	11	10	8
Brighton & Hove Alb.	8	3	2	3	16	23	8
Reading	8	3	1	4	11	22	7
Colchester United	9	3	1	5	12	25	7
Swindon Town	7	3	0	4	17	16	6
Brentford	7	2	1	4	7	10	5
AFC Bournemouth	8	1	3	4	7	25	5
Bristol Rovers	8	0	3	5	10	23	3
Wycombe Wanderers	8	0	2	6	7	26	2

SUPPLIED BY



Mitre®

MITRE SPORTS INTERNATIONAL LTD.
BIRKBY, HUDDERSFIELD, HD1 5AJ. TEL: 01484 537488 FAX: 01484 530042

A GENESCO Company



Football wins the Pools every Saturday



Every time you enter Littlewoods, Vernons and Zettors Pools or Littlewoods Spot the Ball you are helping the game at all levels. The Football Trust administers funds from the Pools, helping clubs to improve safety and comfort.

The Trust receives some £37 million every year, all of it coming directly or indirectly from Littlewoods, Vernons and Zettors Pools and Littlewoods Spot the Ball.



LITTLEWOODS VERNONS ZETTERS
*Making sure football wins
the Pools each week*

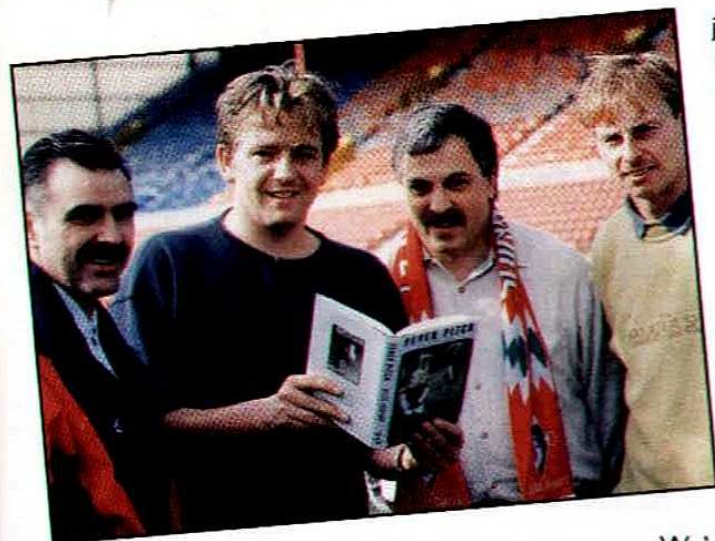


THE FOOTBALL TRUST
Helping the game

THE FOOTBALL TRUST, WALKDEN HOUSE, 10 MELTON STREET, LONDON NW1 2EB

MY *With* VIEW

STEPHEN NORTH TALKING TO MARK SHANAHAN



Stephen North with John Gorman, Don Rogers and Paul Bodin

Stephen North...who's he?' you're probably wondering as you flick through these pages. Well, for any of you who watch ITV's London's Burning, I spent four years as the Millwall FC and fire-fighting obsessed Colin Parrish. But now I've got a new obsession in my life - and it revolves around Arsenal.

After four years of playing Colin I was looking to get out of London's Burning. It was a great series to work on, but I didn't want to get typecast as either a fireman or a Millwall fan! When it comes to regular work, acting's a very dodgy profession, so I was very lucky when my next job came along - and it came from an unlikely source.

I've always loved football - though I was a deprived child. I spent my early years in Wantage - hardly the hotbed of the soccer scene - and my parents hated the game. I really got into football when we moved to Brighton. I started going regularly to the Goldstone Ground and, through my acting, teamed up on the terraces with local theatre director, Paul Hodson.

Last year, Paul told me about Fever Pitch - Nick Hornby's award winning study of his obsession with Arsenal. He said he wanted to turn it into a stage play - and was I interested in getting involved. Of course I

jumped at the chance. The book charts Nick's obsession with the North London mob over a quarter of a century. It's really funny and filled with insights into the game from a fan's point of view. It's all about families, class, loyalty, identity and masculinity - all rolled up in football.

Nick had never seen it in terms of a play, but he worked with us on its development, and Paul has come up with a show that captures all the things that everyone liked about the book. It's actually a one man show, so I play everyone from Nick as a kid, through all the famous players - including Charlie George - right through to being a one-man North Bank.

We've taken the show all over the country, including the Edinburgh Festival and Glasgow's Mayfest, as well as Ireland. We were in Galway the night the Republic beat Italy, and the show went down a storm.

It's really enlightening putting on the play in different towns around the country. The theatre management tell me they get people in who've never seen live theatre before - unless it's played out on a football pitch. I'm looking forward to playing in Swindon, because we've got a scene featuring the 1969 League Cup Final, and I was lucky enough to meet Don Rogers in the flesh when I came down to the County Ground to promote the show.

It's great to spend a year earning a living from football. Of course there are the downsides - everyone now thinks I'm an Arsenal fan, Heaven forbid! There's the chance ad-lib each night, so I should be able to get in a few comments about the Swindon/Bristol rivalry when we play at the Arts Centre. So, if you like football and a laugh, why not come along - and we'll have a beer in the bar afterwards!

Fever Pitch, starring Stephen North is at the Arts Centre, Devizes Road, Swindon on Friday November 18 and Saturday November 19. Tickets are £6, but the first 25 Town fans who present this programme at the Arts Centre Box Office can get 10 per cent off a pair of tickets.

Five pairs of tickets for the show are on offer as prizes in our competition on page 31.

THE NEW **SWINDON TOWN SUPERSTORE**



HOURS OF BUSINESS

Mondays - Fridays 9.00am - 5.00pm
Every Saturday 9.00am - 3.00pm
(Home Matchdays 4.45pm - 5.30pm)

Tel: (01793) 430430 Extn 209

WE ARE PLEASED TO ACCEPT



OUR NEW COLOUR BROCHURE

For your free copy just send an A5-size SAE to:
Swindon Town F.C., Club Shop,
County Ground, Swindon, SN1 2ED.

Main Sponsor  **Burmah**



ON THE ROAD

AWAY TRAVEL INFORMATION

BRIGHTON & H.A.

WEDNESDAY 26 OCTOBER

MIDDLESBROUGH

SATURDAY 29 OCTOBER

TRAVEL CLUB

Tel: 01793 611499

**Depart County Ground,
Swindon 15.30**

Fare £8.00

Office Open Tue -Thu 19.30 - 21.30 and
Matchdays before and after the game.

**Depart County Ground,
Swindon 07.30**

Fare £16.00

Office Open Tue -Thu 19.30 - 21.30 and
Matchdays before and after the game.

SAS TRAVEL

Tel: 01793 825935 (24hour service)

Depart

Malmesbury:

Wootton Bassett:

West Swindon:

County Ground:

Ermin Street:

Fare £7.00

14.45

15.00

15.15

15.30

15.45

Depart

Malmesbury:

Wootton Bassett:

West Swindon:

County Ground:

Ermin Street:

Fare £16.00

06.45

07.00

07.15

07.30

07.45

Bookings also taken in association with **SILVER KNIGHT**

Mon-Fri 09.00 - 17.00 Tel: 01249 720360

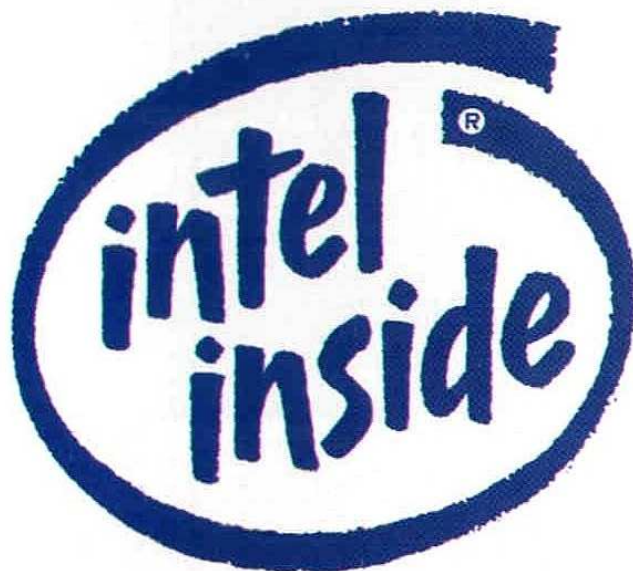
County Ground office open Tue-Thu 10.00 - 14.00
and Saturday Matchdays before the game.

ROUTE TO BRIGHTON

From Swindon M4 to join M25 anti clockwise joining M23 (following signs for Gatwick). M23 to join A23 and 2 miles after Pyecombe follow Hove signs for 1 mile. Bear left into Nevill Road (A2023) turning left after 1 mile at crossroads into Old Shoreham Road.

ROUTE TO MIDDLESBROUGH

A419 from Swindon to Cirencester. Then A429 to join M40 at j15 via Stow-in-the-Wold and Moreton-in-Marsh. M40 to j16 then M42/A453 to join M1 at j24. Stay on M1 to j32 to join A1. Stay on A1 to join A170 to Thirsk. Take A19 to join A66. At roundabout take 4th exit into Heywood Street and then left into Ayresome Street.



pentium®
P R O C E S S O R



SWINDON TOWN

ENDSLEIGH LEAGUE DIVISION ONE AS AT 17 OCTOBER 1994

	P	W	D	L	F	A	W	D	L	F	A	Pts.
Wolverhampton W.	12	6	0	0	14	2	2	2	2	8	8	26
Reading	12	4	2	0	8	0	3	1	2	9	6	24
Tranmere Rovers	12	6	0	0	8	0	3	1	2	9	6	24
Middlesbrough	12	4	1	1	10	4	3	1	2	7	8	23
Swindon Town	12	5	2	0	11	5	1	0	4	7	10	20
Charlton Athletic	12	3	2	1	11	7	2	2	2	11	12	19
Stoke City	12	4	0	2	13	7	1	2	3	4	13	17
Southend United	12	4	0	2	7	6	1	2	3	5	14	17
Oldham Athletic	12	4	0	2	13	9	1	1	4	7	11	16
Bolton Wanderers	12	3	2	1	9	5	1	2	3	10	11	16
Luton Town	12	1	2	3	8	9	3	2	1	9	7	16
Portsmouth	12	2	2	2	9	10	2	2	2	7	7	16
Sheffield United	11	3	2	1	9	4	1	2	2	4	4	16
Sunderland	12	1	4	1	6	5	2	3	1	6	4	16
Derby County	12	3	2	1	8	4	1	1	4	5	9	15
Bristol City	12	2	2	2	3	4	2	1	3	7	7	15
Grimsby Town	12	3	2	1	12	6	0	3	3	7	10	14
Watford	12	2	3	1	10	9	1	2	3	3	8	14
Port Vale	12	3	0	3	7	8	1	2	3	6	10	14
Barnsley	12	2	3	1	5	5	1	2	3	4	7	14
Millwall	12	2	3	1	12	8	0	2	4	2	9	11
Burnley	12	0	4	2	5	7	2	1	3	4	8	11
Notts County	12	0	3	3	7	12	1	1	4	7	11	7
West Bromwich Alb.	11	1	1	2	3	6	0	3	4	6	14	7

FIRST TEAM APPEARANCES AS AT 17 OCTOBER 1994

	LEAGUE		CUP		TOTAL	
	Apps.	Goals	Apps.	Goals	Apps.	Goals
Joey Beauchamp	9(1)	1	5	1	14(1)	2
Austin Berkley	0(2)	0	2(1)	0	2(3)	0
Paul Bodin	11	5	4	0	15	5
Fraser Digby	12	0	4(1)	0	16(1)	0
Terry Fenwick	2	0	0	0	2	0
Jan Aage Fjortoft	12	7	3(1)	3	15(1)	10
Ty Gooden	0	0	0(1)	0	0(1)	0
Chris Hamon	0	0	0(2)	0	0(2)	0
Nicky Hammond	0(12)	0	1(4)	0	1(16)	0
Kevin Horlock	8(4)	0	3(1)	0	11(5)	0
Brian Kilcline	2(3)	0	4	0	6(3)	0
Stuart James	0	0	0(1)	0	0(1)	0
Martin Ling	12	1	4(1)	0	16(1)	1
Edwin Murray	0	0	0(2)	0	0(2)	0
Andy Mutch	4(6)	0	2(2)	2	6(8)	2
Luc Nijholt	12	0	5	0	17	0
Wayne O'Sullivan	5(3)	0	3(1)	0	8(4)	0
Marcus Phillips	0	0	0(1)	0	0(1)	0
Mark Robinson	12	0	5	0	17	0
Keith Scott	9(3)	3	5	2	14(3)	5
Shaun Taylor	12	1	3	0	15	1
Andrew Thomson	9	0	4(1)	0	13(1)	0
Neil Webb	2	0	0	0	2	0
Adrian Whitbread	1	0	0	0	1	0
Steve White	0	0	0(1)	0	0(1)	0

SWINDON TOWN FIXTURES 1994/95

DATE	OPPONENTS	FA
Sun 14 Aug	PORT VALE	H 2-0
Sat 20 Aug	Tranmere Rovers	A 2-3
Wed 24 Aug	ATALANTA A.I.C.(1)	H 0-2
Sat 27 Aug	WATFORD	H 1-0
Wed 31 Aug	WEST BROMWICH ALBION	H 0-0
Sat 03 Sep	Notts County	A 1-0
Tue 06 Sep	Venezia A.I.C. (2)	A 0-1
Sun 11 Sep	DERBY COUNTY	H 1-1
Wed 14 Sep	READING	H 1-0
Sat 17 Sep	Charlton Athletic	A 0-1
Wed 21 Sep	CHARLTON ATH. (C.C.C. 2-1)	H 1-3
Sat 24 Sep	GRIMSBY TOWN	H 3-2
Tue 27 Sep	Charlton Athletic (C.C.C. 2-2)	A 4-1
Sat 01 Oct	Barnsley	A 1-2
Wed 05 Oct	LECCE A.I.C. (3)	H 3-1
Sat 08 Oct	WOLVERHAMPTON W.	H 3-2
Sat 15 Oct	Portsmouth	A 3-4
Sat 22 Oct	SOUTHEND UNITED	H
Wed 26 Oct	Brighton & H.A. (C.C.C. 3)	A
Sat 29 Oct	Middlesbrough	A
Tue 01 Nov	Bolton Wanderers	A
Sat 05 Nov	MILLWALL	H
Tue 15 Nov	Ascoli A.I.C. (4)	A
Sun 20 Nov	Bristol City	A
Wed 23 Nov	BURNLEY	H
Sat 26 Nov	LUTON TOWN	H
Wed 30 Nov	C.C.C.4	
Sat 03 Dec	Southend United	A
Sat 10 Dec	TRANMERE ROVERS	H
Sat 17 Dec	Port Vale	A
Mon 26 Dec	Stoke City	A
Tue 27 Dec	SHEFFIELD UNITED	H
Sat 31 Dec	Oldham Athletic	A
Mon 02 Jan	SUNDERLAND	H
Sat 07 Jan	F.A.C. 3	
Sat 14 Jan	MIDDLESBROUGH	H
Sat 21 Jan	Millwall	A
Sat 28 Jan	F.A.C. 4	
Sat 04 Feb	Burnley	A
Sat 11 Feb	BOLTON WANDERERS	H
Sat 18 Feb	Luton Town	A
Wed 22 Feb	BRISTOL CITY	H
Sat 25 Feb	BARNLEY	H
Sat 04 Mar	Grimsby Town	A
Wed 08 Mar	NOTTS COUNTY	H
Sat 11 Mar	Watford	A
Sat 18 Mar	West Bromwich Albion	A
Wed 22 Mar	Derby County	A
Sat 25 Mar	CHARLTON ATHLETIC	H
Sat 01 Apr	Reading	A
Sat 08 Apr	OLDHAM ATHLETIC	H
Sat 15 Apr	Sheffield United	A
Mon 17 Apr	STOKE CITY	H
Sat 22 Apr	Sunderland	A
Sat 29 Apr	PORTSMOUTH	H
Sat 06 May	Wolverhampton W.	A

A.I.C. = Anglo Italian Cup C.C.C. = Coca-Cola Cup F.A.C. = F.A. Cup
© The Football League Ltd 1994 *After Extra Time

N STATISTICS



ATT.



10,549	DIGBY	ROBINSON	BODIN	WHITBREAD	NIJHOLT	TAYLOR	LING	FENWICK	FJORTOFT 1	MUTCH	HORLOCK	SCOTT o 1	O'SULLIVAN o	HAMMOND
8,482	DIGBY	ROBINSON	BODIN	KILCLINE	NIJHOLT	TAYLOR	LING	FENWICK	FJORTOFT 2	MUTCH	HORLOCK	SCOTT o	BEAUCHAMP o	HAMMOND
5,167	DIGBY	ROBINSON	BODIN	KILCLINE	NIJHOLT	THOMSON	LING	BEAUCHAMP	FJORTOFT	SCOTT	HORLOCK	WHITE o	MUTCH	HAMMOND
9,781	DIGBY	ROBINSON	BODIN	THOMSON	NIJHOLT	TAYLOR	LING 1	BEAUCHAMP	FJORTOFT	SCOTT	O'SULLIVAN	HORLOCK	MUTCH	HAMMOND
11,555	DIGBY	ROBINSON	BODIN	THOMSON	NIJHOLT	TAYLOR	LING	BEAUCHAMP	FJORTOFT	SCOTT	O'SULLIVAN	HORLOCK o	MUTCH o	HAMMOND
6,537	DIGBY	ROBINSON	HORLOCK	THOMSON	NIJHOLT	TAYLOR	LING	BEAUCHAMP	FJORTOFT 1	SCOTT	O'SULLIVAN	MUTCH o	KILCLINE	HAMMOND
1,250	HAMMOND	ROBINSON	HORLOCK	KILCLINE	NIJHOLT	THOMSON	LING	BEAUCHAMP	MUTCH	BERKLEY	O'SULLIVAN	HAMON o	MURRAY o	DIGBY o
9,043	DIGBY	ROBINSON	BODIN	THOMSON	NIJHOLT	TAYLOR	LING	BEAUCHAMP	FJORTOFT 1	SCOTT	HORLOCK	MUTCH o	O'SULLIVAN o	HAMMOND
11,551	DIGBY	ROBINSON	BODIN	THOMSON	NIJHOLT	TAYLOR	O'SULLIVAN	BEAUCHAMP	FJORTOFT	LING	HORLOCK	SCOTT o 1	KILCLINE	HAMMOND
9,794	DIGBY	ROBINSON	BODIN	THOMSON	NIJHOLT	TAYLOR	O'SULLIVAN	SCOTT	FJORTOFT	LING	HORLOCK	KILCLINE o	BERKLEY o	HAMMOND
4,932	DIGBY	ROBINSON	BODIN	THOMSON	NIJHOLT	KILCLINE	O'SULLIVAN	BEAUCHAMP	FJORTOFT	LING	SCOTT 1	BERKLEY o	MURRAY	HAMMOND
8,758	DIGBY	ROBINSON	BODIN 2	THOMSON	NIJHOLT	TAYLOR	HORLOCK	BEAUCHAMP	FJORTOFT	LING	SCOTT 1	O'SULLIVAN o	MUTCH o	HAMMOND
4,932	DIGBY	ROBINSON	BODIN	THOMSON	NIJHOLT	TAYLOR	O'SULLIVAN	BEAUCHAMP 1	FJORTOFT 3	LING	SCOTT	HORLOCK	MUTCH o	HAMMOND
3,911	DIGBY	ROBINSON	BODIN	THOMSON	NIJHOLT	TAYLOR 1	HORLOCK	BEAUCHAMP	FJORTOFT	LING	SCOTT	BERKLEY	MUTCH	HAMMOND
2,375	DIGBY	ROBINSON	BODIN	KILCLINE	NIJHOLT	TAYLOR	HORLOCK	BEAUCHAMP	MUTCH 2	BERKLEY	SCOTT 1	FJORTOFT o	THOMSON	HAMMOND
14,446	DIGBY	ROBINSON	BODIN 1	THOMSON	NIJHOLT	TAYLOR	WEBB	BEAUCHAMP 1	FJORTOFT	LING	SCOTT 1	HORLOCK	MUTCH o	HAMMOND
10,610	DIGBY	ROBINSON	BODIN 1	KILCLINE	NIJHOLT	TAYLOR	WEBB	BEAUCHAMP	FJORTOFT 2	LING	SCOTT	HORLOCK o	MUTCH o	HAMMOND

COMPETITION!!!!

Win tickets to see Stephen North - Star of ITV's 'London's Burning' in Fever Pitch at the Arts Centre in Swindon.

We have five pairs of tickets for the above stage show on Saturday 19 November to be won in our easy to enter competition. All you have to do is answer this simple question:

In London's Burning where is the fictional Borough in London where the Fire Station is based?

Send your answer on a postcard to "Fever Pitch Competition", Swindon Town F.C., County Ground, County Road, Swindon, SN1 2ED.

All entrants must be over 18 years of age.

Closing date for entries is Friday 28 October 1994.



24 HOUR INFORMATION

0891 12 16 40

FOR ALL THE LATEST FOOTBALL NEWS FROM THE COUNTY GROUND.

0891 14 16 40

FOR TICKETS, TRAVEL AND COMPETITION NEWS.

*CALLS ARE CHARGED AT 29P PER MINUTE CHEAP RATE AND 49P PER MINUTE AT ALL OTHER TIMES.

Evening Advertiser

IMPORTANT NOTICE

Important safety announcements by the Club Management over the public address system will be preceded by a loud signal to catch the attention of spectators



ANGLO ITALIAN CUP ADDITIONAL SUBSTITUTES



GOODEN o
PHILLIPS
LING o



O'SULLIVAN
JAMES
HAMON

**ATALANTA
VENEZIA
LECCE
ASCOLI**

Figure in bold = Goalscorer
o = Substitute used

THE TEAM SHEET

SWINDON TOWN

- 1 FRASER DIGBY
- 2 MARK ROBINSON
- 3 PAUL BODIN
- 4 ANDREW THOMSON
- 5 LUC NIJHOLT
- 6 SHAUN TAYLOR
- 7 NEIL WEBB
- 8 JOEY BEAUCHAMP
- 9 JAN AAGE FJORTOFT
- 10 MARTIN LING
- 11 KEITH SCOTT
- 12
- 14
- 15 NICKY HAMMOND

TEAM CHANGES



SOUTHEND UNITED

- 1 PAUL SANSOME
- 2 MARK HONE
- 3 CHRIS POWELL
- 4 PHILIP GRIDELET
- 5 ANDY EDWARDS
- 6 KEITH DUBLIN
- 7 ROGER WILLIS
- 8 RONNIE WHELAN
- 9 DAVID REGIS
- 10 RICKY OTTO
- 11 ANDY THOMSON
- 12 STEVE TILSON
- 13 SIMON ROYCE
- 14 GRAHAM BRESSINGTON

TEAM CHANGES



THE OFFICIALS:



Referee:

J.W. LLOYD (Wrexham, Chwyd)



Linesman (red/yellow flag):

A.C. HOWELLS (Port Talbot, West Glamorgan)



Linesman (yellow flag):

M.J. PERRY (Paignton, Devon)

Reserve Official:

M. PICKERING (Swindon, Wiltshire)



THIS
SEASON'S
LINE UP
from

power
train
PRODUCTS



REPLACEMENT
CAR PARTS



Powertrain Products
Greenbridge Road
Swindon, Wiltshire
SN3 3LB



24 HOUR INFORMATION

0891 12 16 40

FOR ALL THE LATEST FOOTBALL NEWS FROM THE COUNTY GROUND.

0891 14 16 40

FOR TICKETS, TRAVEL AND COMPETITION NEWS.

*CALLS ARE CHARGED AT 33P PER MINUTE (CHEAP RATE AND 40P PER MINUTE AT ALL OTHER TIMES)

Evening Advertiser

Produced by PIA Design and Promotions Limited.
Tel: 01635 35546.

Edited by Jon Pollard.

The views contained herein are not necessarily those of Swindon Town Football Club.
No part of this magazine may be reproduced without the written permission of Swindon Town F.C.

OFFICIAL SPORT DRINK OF
SWINDON TOWN FC

Lucozade
SPORT



VOUCHER
11